

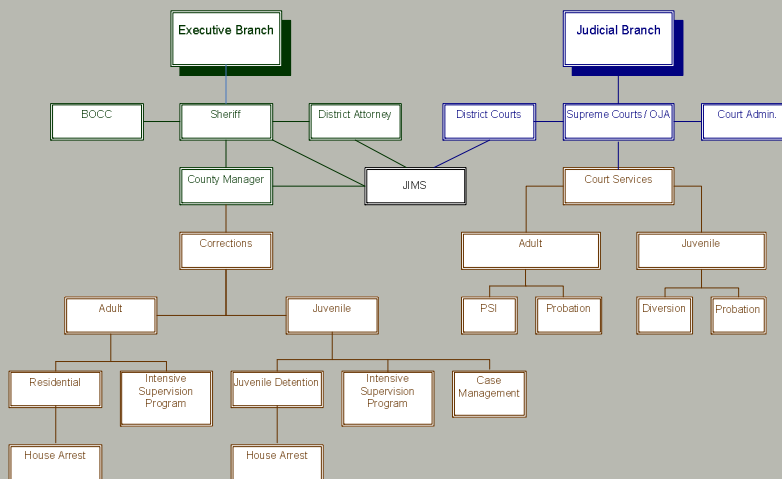


Criminal Justice Overview

10th Judicial District
Johnson County, Kansas



Organizational Chart





Law Enforcement

- Johnson County Sheriff's Office
- 12 Municipal Police Departments plus unincorporated area
- Total county force of over 1,700 officers
- 2009 17,732 booked into Jo Co Jail



District Attorney

Steve Howe, District Attorney

- Specialized Units: Major Cases, Appeals, Warrants, Commitments, Domestic Violence, Economic Crime, Drugs, Juvenile, Sex Crimes, Traffic and Interns
- 2009 case filing stats
 - Total 4,824
 - Criminal 3,157
 - Domestic Violence 1,668
 - Traffic 13,292
 - Juvenile Offender 2,551
 - CINC (Child in Need of Care) 451 /146 Truancy



Sheriff

Frank Denning, Sheriff

- Administers the jail
- Serves civil process papers and criminal warrants
- Provides dispatch for the Sheriff's Office (SO), Unincorporated areas and 12 cities
- Direct patrol
- Investigations for SO and cities as requested
- Crime lab and CSI county-wide
- Offender registry
- Courthouse security



Jail

- Olathe facility constructed in 1985
- New Century "phase 1" constructed in 2000
- New Century "phase 2" opened in 2009
- Olathe closed in 2010 for booking center remodel
- Current capacity 818 Beds
- 1087 capacity when both sites are open

- Current Census
 - 2010 Average Daily Population (ADP) 800
 - Average length of stay (LOS) 17.2 days
 - Average daily cost \$104



District Court

- **Thomas Foster, Chief Judge**
 - 24.5 District Court and Magistrate Judges

- **Michael McLain, Court Administrator**
 - Court Administration
 - Clerk of the Court
 - Court Reporters
 - Administrative Assistants
 - Research Attorneys
 - District Court Trustee
 - Court Services



District Court Court Services Department

- Kathleen Rieth, Chief Court Services Officer**
- Adult (Pre-trial, Pre-Sentence and Probation)
 - Juvenile (Juvenile Intake and Assessment, Diversion and Probation)
 - Domestic Relations (Divorce Mediation, Child Custody Investigations, Supervised Exchange and Visitation)



Department of Corrections

Elizabeth Gillespie, Director

- Adult (Pre-trial Assessment, Intensive Supervision Probation, House Arrest, Adult Residential Center – Probation and Work Release)
- Juvenile (Juvenile Intake and Assessment , House Arrest, Intensive Supervision Probation, Juvenile Justice Authority Case Management , Juvenile Detention Center)



Department of Corrections

- **Juvenile Detention Center**
 - Capacity 69
 - Youth and Family Services Center to open in 2011 with additional 33 beds
 - 2009 ADP: 54
 - 2010 ADP to date: 55.7
 - Average Daily Cost: \$278.41
- **Adult Residential Center**
 - Capacity 449 (348 current with 2 units closed)
 - 2009 ADP: 247.8
 - 2010 ADP to date: 251
 - Average Daily Cost: \$52.59 Probation - \$40.05 Work Release



Criminal Justice Advisory Council

- Created by BOCC resolution 2008
- Criminal Justice Coordinator Position also created
- Community and Justice System Representation
- Projects have included study of juvenile and adult systems and related recommendations



Juvenile System Vision and Challenges **Betsy Gillespie**

- Employment of Evidence-Based Practices
- Juvenile Detention Alternatives Initiative
 - Kansas Juvenile Justice Authority will lead this project statewide
 - Goals will include data analysis of juvenile detention population
 - Low level offenders and technical violators are examples of offenders who should be placed in alternative programming
 - Youth who spend time in detention are more likely to not graduate, have low wage jobs, abuse substances and end up in criminal system

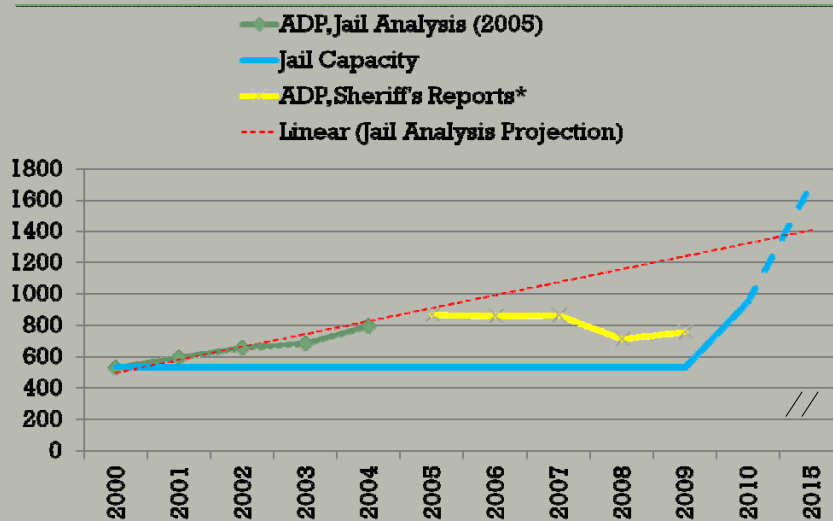


Adult System Vision and Challenges Sheriff Frank Denning

- Introduction of Alternatives to Incarceration within the jail setting
 - Second Chance Act Grant received which will provide funding for Reentry Programming in 2011
 - Justice and Mental Health Collaboration Program Grant received which will provide funding for Mental Health Professional Co-Responder and Mental Health Case Manager to increase diversion in effort to reduce the mentally ill in the justice system



Jail Population





Snapshot of Johnson County Local Law Enforcement 12-2-10

Johnson County historically has benefitted from quality law enforcement services due to:

- Well funded and well trained police departments
- Low violent crime rates
- High functioning collaborative partnerships between
 - 14 Jo Co agencies
 - 4 WY Co agencies
 - 12 Missouri agencies
 - Jo Co Sheriff's Office
 - KHP/KBI other state agencies
 - FBI, ATF, DEA and other federal Agencies
- Well-planned service tailored to specific needs of each community
- Enhanced technology making information exchange and communication immediate and effective

Issue

Declining budgets

Response

Traditional; cut services by eliminating specialized units pull back from task Forces. Contemporary; don't just do less with less, work smarter with public/private partnerships, technology i.e. demand policing, mapping, scheduling, hot spots, examine staffing levels and command positions, civilianize where possible, utilize volunteers in new ways

Issue

Declining # of qualified applicants

Response

Early recruiting efforts i.e. grade school, middle school, community outreach, be
Become better marketers with citizen police academies, youth academies,
Community outreach, targeted recruitment

Issue

Adapting to new generation of employees

Response

Retool procedures, supervision and training without losing basic culture and
values and service levels. Provide mentoring, support, opportunities and
challenges appropriate to the people entering the work place.

Issue

Effectively and positively policing diverse communities

Response

Look for native speakers and use language proficiency incentives, connect with
minority groups through schools, organizations and churches, and provide
officers with cultural education and exposure. Engage and involve minority
citizens.

Issue

Changing complexion of crime: increased violence, Kansas
City Crime is Johnson County crime. High tech computer crime is very
demanding and some element appears in 75% of all reported crime. Gang
activity and crime is growing rapidly and at younger ages

Response

Training law enforcement and community about the needed
balance between officer safety and community contact; constructive use of
police and public video and the media; collaborative intelligence and information
sharing; train and equip officers for higher risk and better human relations skills;
develop cooperative computer labs and task forces and constructive
gang initiatives in partnership with schools, social services, advocacy groups and
parents for early intervention